

Directions to Canterbury Cathedral Lodge

We are situated right in the heart of the City of Canterbury.

By train

Canterbury West and Canterbury East train stations are both 0.5 miles away (an easy walking distance).

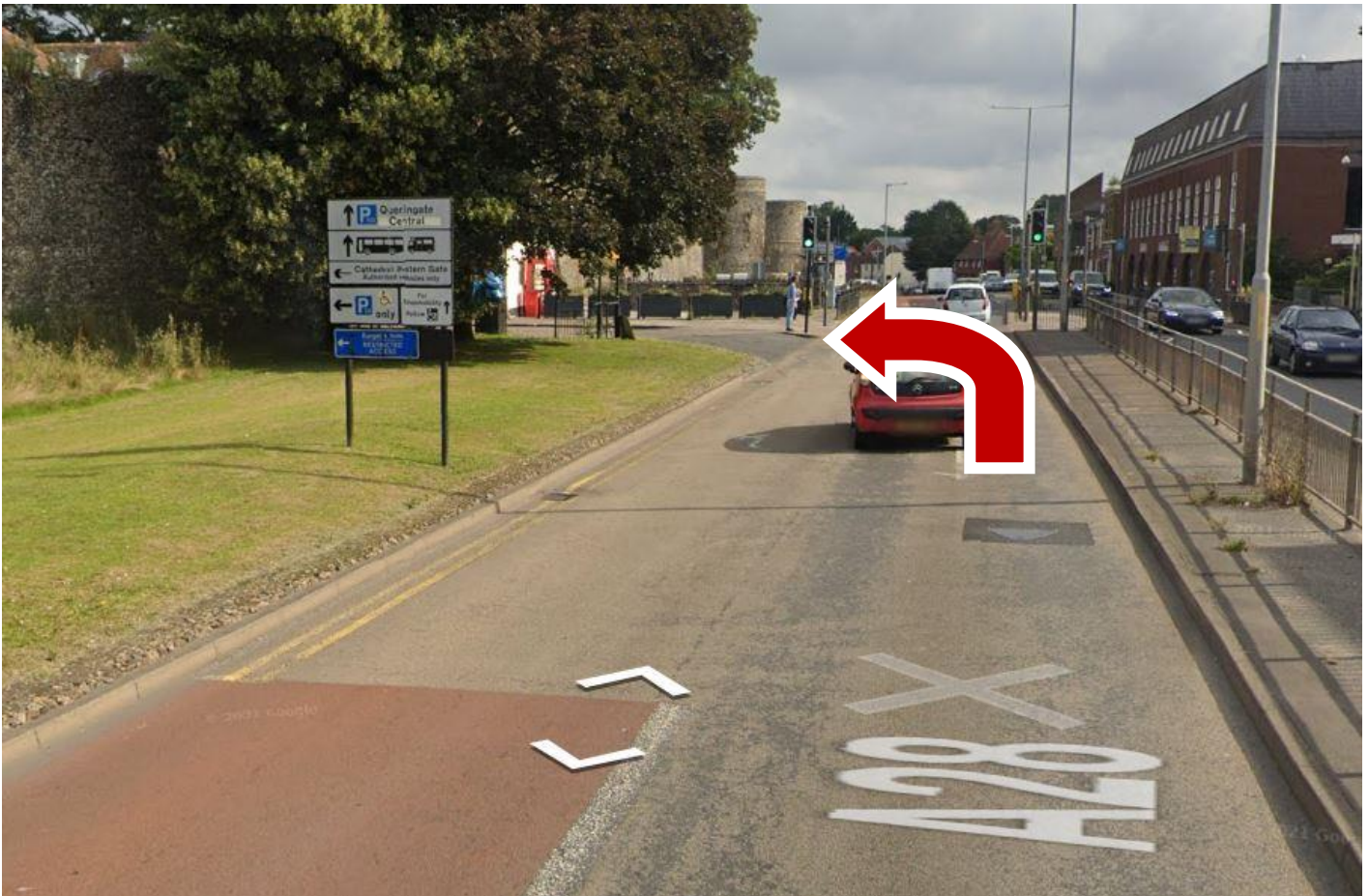
Journey time from London by train is approx 1 hour 30 minutes.

By road

If you are using Sat Nav or a Route Finder, please enter the address as "Burgate, Canterbury" and follow the directions below, rather than using our postcode. Or try CT12HG

From London

- Join the M2 (signposted towards Dover and Canterbury).
- Leave M2 at junction 7 onto the A2 and follow signs for Canterbury
- Leave the A2 onto the A28 (following signs for Canterbury).
- Follow Margate signs along the ring road around Canterbury - over 4 roundabouts.
- After the 4th roundabout (St Georges) turn left into Burgate.



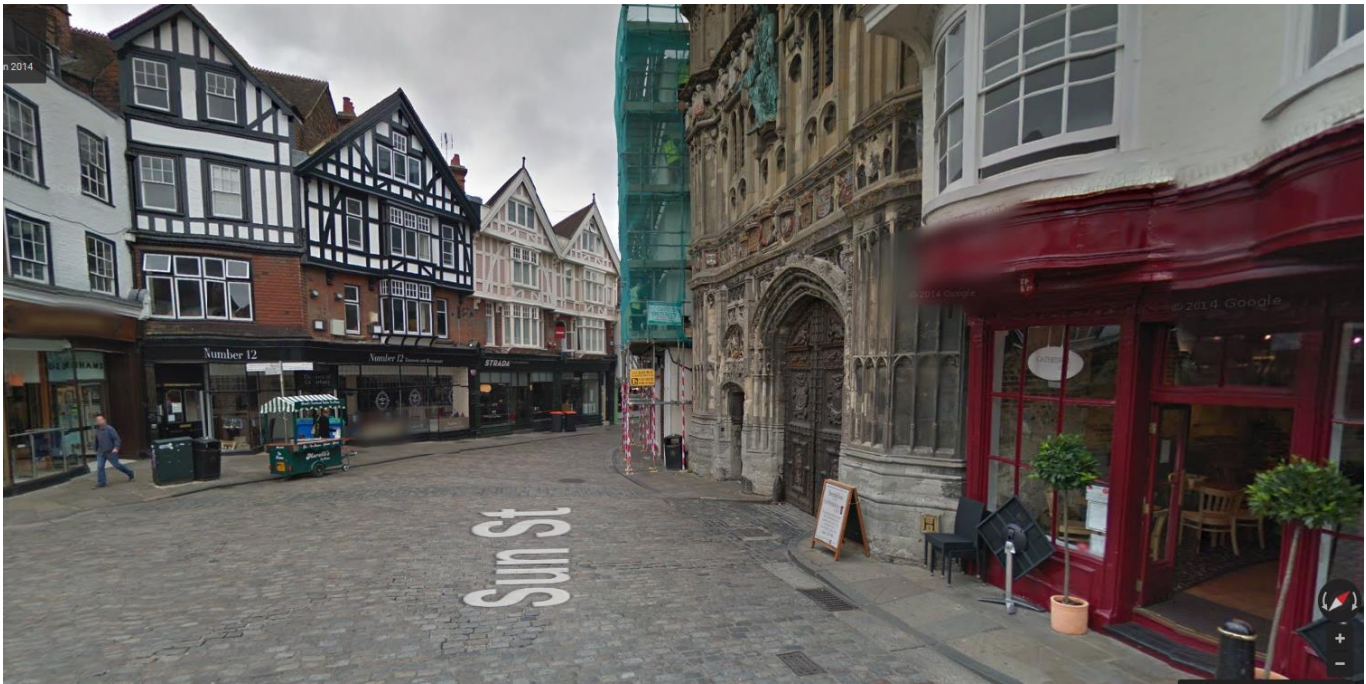


- 07:00 – 18:00 turn right into Postern Gate, just after Thomas Ingoldsby Pub (Marked "B" on map below).



o Christ then

- After 21:00 – ring brass bell on left hand side of the Christchurch Gate to gain entrance.



From Dover

- Leave Dover docks and follow signs to the A2 (signposted Canterbury).
- Turn off A2 onto A28 (signposted Canterbury).
- At Wincheap roundabout take the 3rd exit onto Pin Hill - A28 (Margate).
- Straight over next 2 roundabouts following signs for Margate.
- After 2nd roundabout (St Georges) turn left into Burgate. - **Photo see above -**
- 07:00 – 18:00 turn right into Postern Gate, just after Thomas Ingoldsby Pub (Marked "B" on map below). - **Photo see above -**
- 18:00 – 07:00 continue down Burgate, **You will see bollards ahead which you need to drive up to and press the buzzer and ask for access to the cobbled road leading to the Christ Church Gate. The person receiving you call may ask for your name to authorise access** then turn right into Christchurch Gate (Marked "A" on the map below) - **Photo see above -**
- After 21:00 – ring brass bell on left hand side of the Christchurch Gate to gain entrance.

From Ashford

- From Ashford International Station follow signs for A28 (signposted Canterbury) for approx 14 miles, through Bilting and Chartham.
- Continue on this road, taking 3rd exit at Wincheap roundabout – A28.
- Straight over next 2 roundabouts following signs for Margate.
- After 2nd roundabout (St Georges) turn left into Burgate.
-
- 07:00 – 18:00 turn right into Postern Gate, just after Thomas Ingoldsby Pub (Marked "B" on map below).
- 18:00 – 07:00 continue down Burgate, **You will see bollards ahead which you need to drive up to and press the buzzer and ask for access to the cobbled road leading to the Christ Church Gate. The person receiving you call may ask for your name to authorise access** then turn right into Christchurch Gate (Marked "A" on the map below)
- After 9pm – ring brass bell on left hand side of the Christchurch Gate to gain entrance.

Distances to nearest towns/cities

- London – 60 miles
- Maidstone – 28 miles
- Dover – 19 miles
- Ashford – 15 miles

Transport links

- Canterbury East /West train stations – 0.5 miles
- Ashford International Station – 15 miles
- Dover ferry terminal – 19 miles
- Gatwick airport – 67 miles
- Heathrow airport - 89 miles

KEY TO MAP

CATHEDRAL GATES

- A Christchurch Gate
- B Postern Gate
- C Queningate

CAR PARKS

- 1 Queningate (102 spaces)
- 2 Dover Street (32)
- 3 Holman's Meadow (172)
- 4 Watling Street (210)
- 5 Castle Street Multi-Storey (538)
- 6 Castle Row (98)
- 7 Station Road West (135)
- 8 Pound Lane (148)
- 9 Miller's Field (46)
- 10 St Radigunds (304)
- 11 St John's Nursery (212)
- 12 Northgate (51)

- Taxi Rank
- Longport Coach Park

